



CASE STUDY

Naumai Solar Farm

Northland, New Zealand



PROJECT SIZE
4.6 MW

CABLESMART HANGERS INSTALLED
3,294

METRES OF CATENARY INSTALLED
2,565 m

Transforming challenges into a success. GripplE has supplied Infratec, a solar EPC with its innovative CableSmart above ground cable management system, for use at the Naumai solar farm in Northland, New Zealand.

Enabling Infratec to mitigate the risks, costs and time pressures of an underground cable installation on the difficult flood plain site, the CableSmart solution facilitated the installation of cabling above-ground at the new 4.6 MW fixed tilt solar farm.

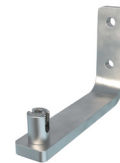
Featured Products



CableSmart Hangers



CableSmart Messenger Kit



CableSmart Messenger Bracket

“The Naumai solar farm was a unique project for us, with some critical challenges to overcome. With easy and efficient installation and reliable and consistent support from GripplE, the CableSmart system was the obvious choice. It allowed us to easily manage cables above ground and avoid the risks and cost of excavation work. The GripplE solar technical team were on hand every step of the way to offer support and assistance. CableSmart is definitely a product we will be using again.”

Claudio Bessone, Program Manager for Infratec

Flood plains present significant challenges for solar farm developments. Flooding during trenching works can cause delays to project completion. Cables and connectors can also be damaged post installation if submerged in water in a flood event.

Involved from the very early stages of the project, the dedicated GripplE solar technical services team provided support to Infratec throughout the design and installation process, allowing the EPC to maximise cost and install efficiency whilst ensuring correct specification to minimise material and logistics costs.

In total GripplE supplied over 2,565 meters of wire and over 3,200 GripplE CableSmart Hangers for the project, offering quick and easy installation compared to traditional trenching methods and other above-ground messenger systems.

Glenn Bills, Solar Business Development Director at GripplE, expressed delight at supporting Infratec in bringing the solar farm to life. He stated, “Using our CableSmart system, Infratec were able to install cabling above ground with confidence, mitigating flooding issues and avoiding the costs of heavy excavation work. Enlisting our support from the beginning, we delivered the full system in bespoke pre-packaged kits, allowing for quick, hassle-free installation. The GripplE team regularly attended site, delivering helpful training and guidance to ensure the project ran smoothly.”

Suspending solar PV cables above ground has become a preferred cable management method in many global markets. Above-ground routing mitigates issues associated with trenching, including difficult ground conditions, flooding, or historic use such as landfill, brownfield, or archaeological issues.

WWW.GRIPPLE.COM/SOLAR-SOLUTIONS



GRIPPLE

CASE STUDY

Naumai Solar Farm

Northland, New Zealand



Grippple's CableSmart system has been designed, developed and manufactured end to end by Grippple in Sheffield, UK. Thanks to Grippple's specialist wire joining and tensioning technology, installation of the product is quick and simple,

making routing easy. The range of engineered hangers are designed to offer maximum cable protection and have been rigorously tested and produced to ensure long-term reliable performance in demanding solar applications.



About Grippple

Grippple is a market-leading manufacturer of wire joiners and tensioners for agriculture, innovative suspension solutions for construction and various engineered solutions for civil, solar and other infrastructure applications.

The Grippple brand was created when we invented the original wire fastener in 1988 and is now registered and used as a trademark globally, giving reassurance to a wide range of markets about the safety, reliability and quality of our products.

As a business, Grippple employs over 950 people across 15 global locations, with six manufacturing sites in South Yorkshire. Additional sales hubs are located in Chicago, Obernai, Warsaw, Toronto, New Delhi and Kobe. As a 100% employee-owned and B Corp certified company, we have a unique approach to business, characterised by investment in people, innovation and sustainable growth.

Sustainability is another core theme of Grippple's strategy. In 2021, Grippple declared its 'Journey to Climate Positive' commitment including achieving carbon neutral UK operations by 2023 and net zero by 2030. As a business, it has received independent certification from Planetmark and B Corp for its transparent and robust approach to sustainable manufacturing.

Press enquiries: Emma Smith, Future PR, emma@futurepr.co.uk 07545 321675, Lucy Worth, Future PR, lucy@futurepr.co.uk 07917 861031 or Ed Mason, Future PR, edward@futurepr.co.uk 07817 061975

WWW.GRIPPLE.COM/SOLAR-SOLUTIONS