

CASE STUDY

New Academic Pavilion
St-Jean Garrison
 St. Jean-sur-Richillieu, Canada





TIME SAVINGS
40 HOURS

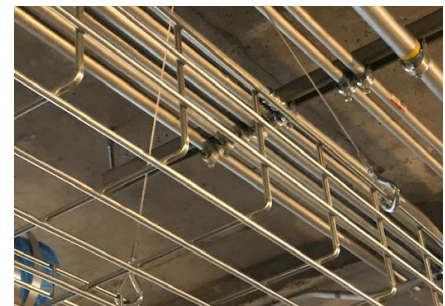
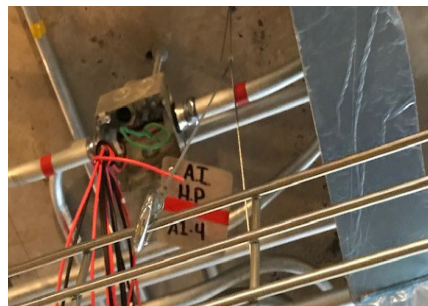
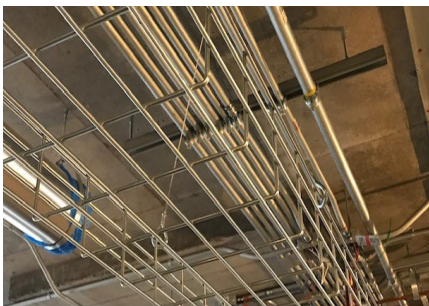
LABOR SAVINGS
\$2,400

TOTAL SAVINGS
\$2,290

The new three-storey \$77-million academic pavilion forms part of a new construction for the Canadian Defence. **Y-Fit Express** hangers were used on this project for the suspension of electrical basket tray.

Project Summary	
Building type	Military
Consultant	AECOM
Main Contractor	Decarel
MEP Contractor	R.G.F Electricque
Building structure	Metal Deck and Concrete
Services	Basket Tray

Featured Products	
<p>Y-Fit</p> 	<p>Express</p> 



“GripplE products serve as a **multi-purpose solution**, offering flexibility during installation. It is easy to manage stock, and is fast to install meaning we were able to make **labour savings**. ”

- Sebastien Dion, Project Manager / Site Superintendent, RGF Electricque -

COST SAVING SUMMARY

	GripplE solution	Traditional method
Overview	YXP2-HG-460mm-5FT	Threaded rod, unistrut, nuts, washers and anchors
Material cost	\$1,350	\$1,240
Installation time	10 hours	50 hours
Labour rate (per hour)	\$60	\$60
Total labour cost	\$600	\$3,000
Total cost	\$1,950	\$4,240

CASE STUDY

New Academic Pavilion
St-Jean Garrison
St. Jean-sur-Richillieu, Canada



PROJECT DETAILS

The Saint-Jean Garrison is located in Quebec and has constructed a pavilion for the Leadership and Recruit School which provides improved training facilities for the Canadian Forces.

The three-storey 18,000m² building will welcome new recruits and officer candidates for training in modern facilities.

The building is constructed from metal deck and concrete and Grippler was chosen by the Contractor for the suspension of electrical basket tray.

The Grippler Y-Fit kit with Express hanger and Snap Hook end fixing was used, and is ideal for installing balanced electrical containment. The product offers a single point

suspension with double hanging points which is quick to install and gives flexibility for height adjustment with a keyless release mechanism.

Unlike the traditional method of threaded rod, unistrut, nuts, washers and anchors, the Grippler solution requires no 'hot works', thus improving health and safety during installation on-site. It is also easy to move and handle, and manage stock due to the fact it is delivered to site boxed in ready-to-use kits.

The Contractor saved \$2,290 in total on this project due to the quick installation time, which was 40 hours quicker than if traditional methods had been used.

