



# Continuing Professional Development SEMINAR

**Gripple is an expert designer and manufacturer of suspension solutions for mechanical and electrical services, modules, lighting, acoustics and signage. A Gripple building services seminar can be seen below. This content can be adapted to meet your specific requirements.**

Gripple's CPD seminars tend to take place at a premises of your choosing, where Gripple can provide a complimentary lunch to make full use of your time. The seminars tend to be around an hour in length, and CPD certificates can be made available to all attendees on request. Requirements for longer presentations on a specific subject of your choice relating to suspension systems, and evening events can also be accommodated.

**Topic: Ensuring Safety & Compliance in Construction**



This CPD will provide the listener with an understanding of the Building Safety Act 2022. Content of this CPD will highlight the different methods of suspending building services, construction fixings and outline what project design support is available within the market. Learn how Gripple's product specifications are tailor-made for the built environment and can help you achieve the requirements of your next M&E project.

**Gripple is able to conduct CPD seminars in-person or if preferable, our CPD is also available to attend online. Please contact Gripple for more information.**

## Prefer to visit us instead?

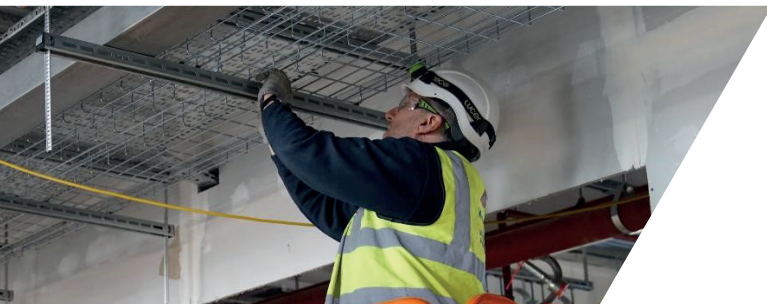
Your CPD seminar can be held at Gripple's site(s) in Sheffield, South Yorkshire. Here, the CPD seminar can be accompanied by a tour of the company's manufacturing facilities. Alternatively, we can also host your CPD seminar at our office in London.

## What can you expect from our CPD?

Our CIBSE approved CPDs are perfect for M&E engineers, designers or specifiers! The 60 minute CPD sessions include a 15 minute Q&A section and a complimentary lunch can be provided to all those who attend, courtesy of Gripple Ltd:

**Our latest 'Ensuring Safety & Compliance in Construction' seminar covers the following topics:**

- Building Services Supports
- The Building Safety Act 2022
- Construction Fixings
- Project Design Support



## Building Services Supports

Properties	Wire Suspension	Track Based Suspension	Threaded Rod & Channel
Full traceability	✓	✓	—
Pre-fabrication	✓	✓	✓
Labour saving	✓	✓	—
Embodied carbon verification	✓	✓	—
Single source of supply	✓	✓	—
UK manufacture	✓	✓	✓
Independent fire testing	✓	✓	—
Technical support	✓	✓	—
No. of components (typical trapeze bracket)	7	5	15

## The Building Safety Act 2022

Main considerations when specifying and installing building services supports.

### > Traceability & Documentation

Building services supports should be completely traceable and documented. This includes detailed records of product sources, material certification, and compliance with regulations, ensuring that every component can be traced and verified throughout the project. Often referred to as The Golden Thread.

### > Testing & Data

Ensure that building services supports are backed by robust testing and performance data. This involves selecting components that meet safety standards and keeping detailed records of their performance to ensure reliability and compliance with regulations. Fire testing is a critical requirement for building services supports.

### > Installer Competence

Installing contractors should be adequately trained and competent for the installation of the building services supports. This is to ensure the health and safety of both the installing contractors and future occupants of the building.

## Interested in booking a Gripple CPD?

Learn how Gripple's product specifications are tailor-made for the built environment and can help you achieve the requirements of a construction project. We have a team of specification managers based throughout the UK. To find out more about our CPD seminar, please contact your local specification manager using the details below and book your session today!

To book a CPD seminar or to discuss your requirements please contact Gripple's Specification Manager, Mark Ward.

[mward@gripple.com](mailto:mward@gripple.com)

+44 (0) 7385 401 263

[gripple.com](http://gripple.com)



Scan for more info



Gripple Ltd Old West Gun Works,  
Savile Street East, Sheffield, S4 7UQ

