



TIME SAVED  
**2,182 HOURS**

WORKING WEEKS SAVED\*  
**54 WEEKS**

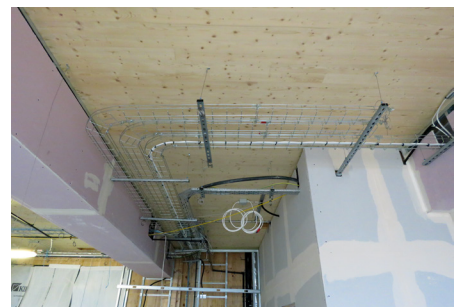
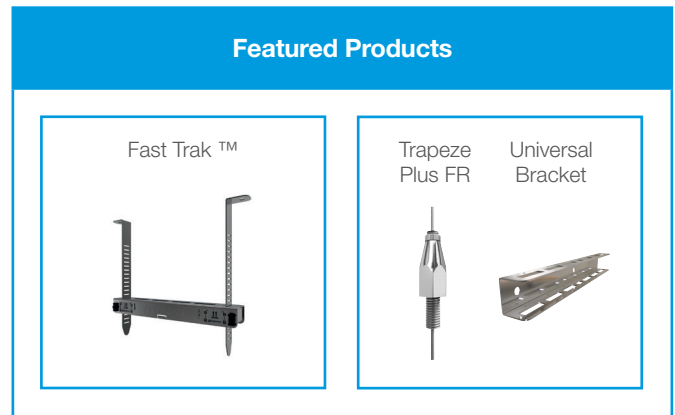
LABOUR SAVED  
**£54,537**

Located on the RAF Oakington base, Cambridgeshire's largest education campus will contain a nursery, a 3FE primary school, a secondary school, a Special Educational Needs (SEN) school and a sixth form college. For the suspension of mechanical and electrical services on this project, Gripplle supplied **Fast Trak™**, **Trapeze Plus FR**, **UniGrip**, **Universal Bracket**, **XP2** and **Duct Trapeze**.

### Project Summary

<b>Main contractor</b>	Kier Construction
<b>Subcontractors</b>	Kershaw Mechanical Services Secker and Sons
<b>Building Type</b>	Education
<b>Services</b>	Electrical & Mechanical Containment

### Featured Products



"On this project we started with 16 fitters, but reduced this number to eight because of the ease of using Gripplle. It's much quicker to install than traditional methods, and helps to keep projects within their timeframe. Kershaw Mechanical have been a consistent user of Gripplle over the years, proving it to be a beneficial system for us to use."

- Andy Moore, Senior Fitter for Kershaw Mechanical Services -

## COST SAVING SUMMARY

	Gripplle solution	Traditional method
Overview	<b>Fast Trak, Trapeze Plus FR, UniGrip, XP2, Duct Trapeze</b>	Channel, threaded rod & channel nuts
Material cost	<b>£44,633</b>	£35,085
Installation time	<b>647 hours</b>	2,829 hours
Labour rate (per hour)	<b>£25</b>	£25
Total labour cost	<b>£16,175</b>	£70,712
Total cost	<b>£60,808</b>	£105,797

\*Figure based on one installer working for eight hours a day



### PROJECT DETAILS

The first phase of the Northstowe Education Campus will cost around £45m, and include a secondary school, a multipurpose school hall/theatre space and drama studios, a gym, two dance studios, a football pitch and a 110-place Special Education Needs (SEN) school. M&E contractors for the project, Kershaw Mechanical Services, have been using Gripplle to save time on the installation of first fix mechanical and electrical containment for three years.

As the project was constrained to strict timescales due to the campus' opening schedule, all M&E services on the Northstowe project were suspended using Gripplle: UniGrip with a Hook foot attachment was used for pipework and radiant panels, Trapeze Plus FR was used for electrical containment, and Duct Trapeze and Express Hangers were used for suspending the rectangular and spiral ductwork.

UniGrip No. 2 with the Hook foot attachment was chosen for the radiant panels, due to its unique snap hook design that instantly secures panels to the soffit. Load rated at 55kg with a 5:1 SWL, these hangers provide a secure method of suspension for radiant panels. Trapeze Plus FR, used for hanging the electrical containment, is an independently fire tested Gripplle suspension solution. Designed for quick attachment to channel, Trapeze Plus FR features an integral adjustment button that allows for easy changes in height during installation.

Fast Trak, Gripplle's rapid trapeze bracket system, was used by Secker & Sons for securing the AC pipes. Easy to fit, handle and transport on-site, this pre-fabricated product generates no waste and rapidly speeds up the typically lengthy installation process. All products were delivered to site labelled by area of installation, to facilitate faster fitting and reduce waste.

