



TIME SAVINGS
413 HOURS

WORKING WEEKS SAVED*
10 WEEKS

LABOUR SAVINGS
£8,260

The new BBC state-of-the-art studio complex in Cardiff Bay will become the permanent home to BBC dramas such as Casualty, Pobol y Cwm, and Doctor Who. The site hosts nine studios covering 170,000 sq. ft (15,800 sqm). Contractors opted to use Gripplle [QT Universal Clamp](#), [Standard Hanger](#), [Catenary Kit](#), [C-Clip](#), [Trapeze Plus FR](#) and [Y-Fit](#) products on this project.

Project Summary

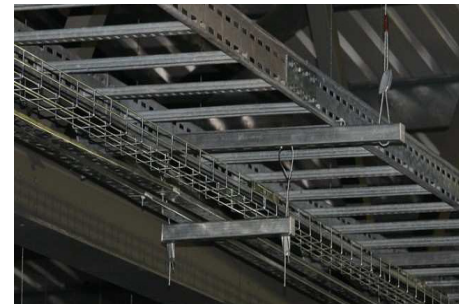
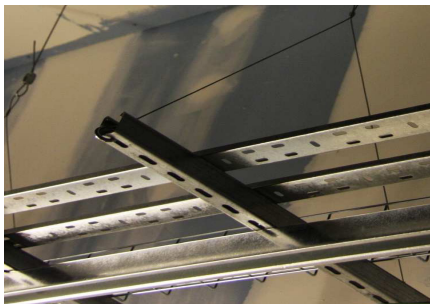
Building type	TV Studio
Mechanical, Electrical & HVAC Contractor	Whitehead Building Services
Suspended Ceilings Specialist	Richard Kemble Ceilings
Services	Mechanical, Electrical, HVAC Services, Pipework and Acoustic

Featured Products

Trapeze Plus FR



QT Universal Clamp



“For this challenging job, Gripplle systems proved invaluable on two counts. Firstly, providing an innovative solution not only to a construction problem but to the critical acoustics issue and secondly, the speed of installation was key to meeting deadlines.”

- Project Manager, Richard Kemble Ceilings -

COST SAVING SUMMARY

	Gripplle solution	Traditional method
Overview	Standard Hanger, Catenary Kit, C-Clip, QT Universal Clamp, Trapeze Plus FR and Y-Fit	Strut, window brackets, M8 threaded rod, washers, nuts, bolts and various pipe rings
Material cost	£6,245	£8,473
Installation time	160 hours	573 hours
Labour rate (per hour)	£20	£20
Total labour cost	£3,200	£11,460
Total cost	£9,445	£20,203

*Figure based on one installer working for eight hours a day

WWW.GRIPPLLE.COM



PROJECT DETAILS

Gripplle supplied a number of innovative solutions in order to suspend various building service systems, particularly when it came to the suspension of acoustic panels within the building. The use of Gripplle products ensured installation time was slashed by more than half as no hot works were required and preparation time was reduced.

Richard Kemble Ceilings, a specialist in suspended ceilings, chose to support the metal framework using Gripplle Hangers. Each studio required over 1,000 fixing points to support the load of 45 kg per square metre.

The Gripplle lightweight and flexible wire rope system is easy to transport, handle and install. If traditional methods like threaded rod were used to suspend the acoustic panels then each studio would have taken over a week to complete. By using Gripplle products the installation only took 2 days to complete per studio. A total of 9 studios were fitted within four weeks. It would have taken at least nine weeks to complete had the contractor opted for traditional suspension methods.

The Gripplle Trapeze Plus FR makes channel suspension secure and durable by reducing the time installers spend working at height. The Trapeze Plus FR is fitted with a easy-to-use integral release button allowing for finite adjustment.

The Catenary Kit has been designed specifically

for catenary installations or bracing applications – arriving to site as a complete, ready-to-use kit. On this project the Gripplle C-Clip was combined with the Trapeze Plus FR to suspend pipework. The Gripplle Y-Fit is a single hanger with double hanging points to improve stability and centre of gravity. The Y-Fit was used on containment, but can also be used with cable trays. One leg can be detached to allow access to cables.

When installing large diameter spiral ducting its important to limit the time spent working at height in order to improve health and safety. Gripplle Standard Hangers were pre-installed by quickly looping over the purlins, ready to receive the duct. Gripplle Standard Hangers were used throughout the facility on spiral duct, with and without insulation.

On rectangular duct work, the Gripplle Standard Hanger was combined with the corner saddle, which is offered both in a magnetic and non-magnetic version.

The Gripplle QT Universal Clamp fits pipe diameters from 3/8" to 2-1/2". This 'one-size-fits-all', coupled with the fast-fit installation, has proved very useful on this project. Not only does the 'one-size-fits-all' mean that there is just one size to stock rather than numerous sizes of clamps lying around the site, but it also takes the hassle out of installing different pipe diameters. With no tools required for installation, the self-click closure allows for easy and fast fixing.



"There is extensive ductwork throughout the facility, both in the nine studios and the support rooms. Using Gripplle gave us great time savings and flexibility throughout the project."
- Project Manager, Whitehead Building Servies -