

CASE STUDY

Swansea City FC,
Landore Training Academy,
Swansea, UK



TIME SAVINGS
425 HOURS

WORKING WEEKS SAVED*
11 WEEKS

LABOUR SAVINGS
£8,500

Swansea City Academy develops talented young footballers from the local and surrounding area from age eight to 23. The facility houses an all-weather pitch, as well as classrooms, treatment rooms, a café and offices. Gripplle supplied [Universal Brackets](#), [QT Universal Clamps](#), [Trapeze Plus FR](#), [Standard Hangers](#), [Butterfly Trapeze](#) and [Cable Basket Adaptors](#) to the regeneration project.

Project Summary

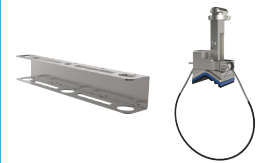
Building type	Education & Sports
Mechanical Contractor	Renewable Energy
Electrical Contractor	Jaxx Bay Ltd
Services	Mechanical and Electrical

Featured Products

Trapeze Plus FR



Universal Bracket
QT Universal Clamp



“Our distributor Lindab recommended Gripplle products for this project. We took advantage of the take-off service and all staff provided an excellent service on and off site. The schedule was tight but Gripplle products are quick, simple and easy to install. We made a labour saving of six weeks on the installation of the pipework and ductwork.”

- Director, Renewable Energy Wales -

COST SAVING SUMMARY

	Gripplle solution	Traditional method
Overview	Pre-fabricated Universal Brackets, QT Universal Clamps, Trapeze Plus FR, Standard Hangers and Butterfly Trapeze	Strut, M8 threaded rod, channel support, washers, nuts, bolts and various pipe clamps
Material cost	£13,800	£7,850
Installation time	50 hours	475 hours
Labour rate (per hour)	£20	£20
Total labour cost	£1,000	£9,500
Total cost	£14,800	£17,350

*Figure based on one installer working for eight hours a day



PROJECT DETAILS

Mechanical contractor for this project, Renewable Energy (Wales), and the electrical contractor, Jaxx Bay Ltd., both used GripplE products for the first time on the Landore Training Academy project. GripplE was recommended to Renewable Energy by their mechanical distributor, Lindab, and they also took advantage of the unique GripplE engineering design service.

The installation design service from GripplE ensured that Renewable Energy were only supplied with the exact quantities of products they required, which prevented shortages or costly and unnecessary additional supplies on-site. Based on the site drawings and site visits, GripplE was able to review the project plans and specifications to more effectively advise on the type and quantity of GripplE products Renewable Energy would need for the project.

For the electrical containment, Jaxx Bay used GripplE's Cable Basket Adaptor with Trapeze Plus FR No. 2 to suspend electrical containment throughout the site. Its unique design means the adaptor simply twists onto the basket with no channel supports required. The Cable Basket Adaptor also provides the flexibility to revisit services for adjustment or maintenance. Jaxx Bay Ltd used the retaining clip, which pre-fits and holds the Trapeze unit onto the cable basket in preparation for working at height. The levels were easy, simple and quick to adjust

and set, as the pin adjustment of the Trapeze Plus FR No.2 allowed for simple movement up and down the wire.

Renewable Energy used a combination of products to install the ductwork. Spiral duct was suspended from the soffit in single point suspensions using Standard Hanger No.2 kits, and Butterfly Trapeze was used to install the plenum boxes. The Butterfly Trapeze eliminated the need for channel support and could be placed anywhere on the plenum box, giving maximum flexibility and a quick and easy installation.

Renewable Energy used GripplE's Universal Brackets alongside Universal QT Clamps to pre-fit at pre-set centres in order to install the pipework. The Trapeze Plus FR No. 2 was then used to suspend the brackets from the soffit. This reduced the installation time of the pipework, and also meant no hot works or cutting and filling on site was required, with the brackets and clamps supplied direct to site in ready-to-use kits. The underground waste pipe was also installed with the QT Universal Clamp.

Jaxx Bay Ltd installed the suspended ceiling using the Standard Hanger No. 3 with a Kon Floor Deck Wedge End Fixing. The Standard Hangers were ideal to quickly and efficiently install the ceiling raft. Standard Hangers are cleaner, neater and stronger than traditional methods such as twisted wire.



"The specifications for the project changed repeatedly, GripplE products provided the flexibility to reposition the containment layout quickly and efficiently. The on site help provided was invaluable, the service we received enabled us to quickly order more parts when changes occurred. We have been converted from rod, and will be using GripplE's products on all future projects."

- Site Foreman, Jaxx Bay Ltd -