

# TM65 Mid-Level Calculation

## FTB-770

Site name	Norfolk Bridge Works
Site address	11 Leveson Street, Sheffield, S4 7ER
Products per year	17,088

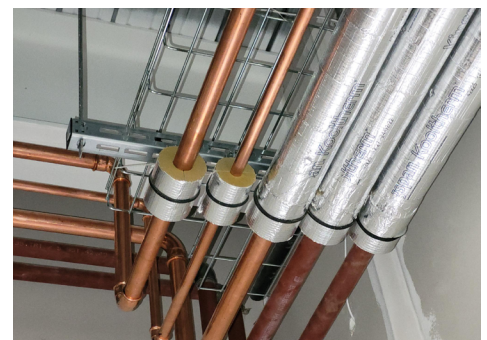


Assessment date	29/06/2022
Assessor	Tasha Lyth
Organisation	Gripple Ltd
Contact	sustainability@gripple.com

Embodied carbon result with 'mid-level TM65 calculation' method total:

**7.126 (kg CO<sub>2</sub>e)\***

Type of product	MEP supports and bracketry
Capacity of equipment (M)	0.77 m
Product weight (kg)	1.47kg
Material breakdown for at least 95% of the product weight (Y/N)	Y
Service life of the product (years)	25**
Types of refrigerant	N/A
Refrigerant GWP	0.00 kg
Energy consumption of the factory per unit of product (kWh)	0.56 kWh: Electricity, natural gas
Location of manufacture	Sheffield, UK
Product complexity	Category 1: See CIBSE TM65 table 4.3



\*Figure reached using 'Mid-Level' TM65 calculator

\*\*Product service life when installed in accordance with Gripple key recommendations, 25 year extended product warranty available at Technical Services discretion.

# TM65 Mid-Level Calculation

## FTB-770



Embodied carbon result with 'mid-level TM65 calculation' method total:

7.126 (kg CO<sub>2</sub>e)\*

### Embodied carbon results breakdown (kg CO<sub>2</sub>e)

A1: Material extraction	4.389 kg CO <sub>2</sub> e	TM65 assumption
A2: Transport	0.291 kg CO <sub>2</sub> e	TM65 assumption
A3: Manufacturing	0.134 kg CO <sub>2</sub> e	
A4: Transport to site	0.058 kg CO <sub>2</sub> e	TM65 assumption
B1: Use	0.000 kg CO <sub>2</sub> e	TM65 leakage type 0
B3: Repair	0.454 kg CO <sub>2</sub> e	TM65 assumption
C1: Deconstruction	0.000 kg CO <sub>2</sub> e	TM65 leakage type 0
C2: Transport	0.019 kg CO <sub>2</sub> e	
C3: Waste processing	0.134 kg CO <sub>2</sub> e	
C4: Disposal	0.001 kg CO <sub>2</sub> e	TM65 assumption

### Embodied carbon results - without refrigerant leakage (kg CO<sub>2</sub>e)

A1-C4 (excluding B1,C1)	5.481 kg CO <sub>2</sub> e
A1-C4 with Buffer Factor (excluding B1, C1)	7.126 kg CO <sub>2</sub> e

### Embodied carbon result - refrigerant leakage only (kg CO<sub>2</sub>e)

B1 (Refrigerant leakage during use) + C1 (Refrigerant leakage end of life)	0.000 kg CO <sub>2</sub> e
--	----------------------------

### Assumptions

A1: Material carbon coefficient source	Source = CIBSE TM65 table 2.1
B1: Refrigerant annual leakage rate (%)	0%: Source = CIBSE TM65 table 4.13 type 2
C1: Refrigerant end of life recovery rate (%)	100%: Source = CIBSE TM65 table 4.13 type 2
B3: Materials replaced as part of repair (%)	100%: Source = CIBSE TM65
C4: Percentage of product going to landfill (%)	10%: Source = CIBSE TM65

\*Figure reached using 'Mid-Level' TM65 calculator \*\*25 years for project work as decided by Gripple Technical Services

[www.gripple.com](http://www.gripple.com)

TM65-ENG-FTB-770

Gripple's policy is one of continuous development and innovation. We therefore reserve the right to alter specifications, etc. without notice.



Gripple Ltd | The Old West Gun Works | Savile Street East | Sheffield S4 7UQ  
Tel 0800 018 4264 Fax 0114 275 1155 Email [sustainability@gripple.com](mailto:sustainability@gripple.com)